

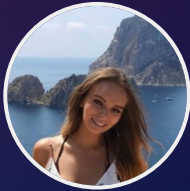


TALOS

DEMO DAY
Friday 10th February

INTRODUCTION

TEAM EXPERTISE



Stephanie

Medicine, cell and gene therapy biotech and finance



Elias

Software engineering and mathematics and ML development



Jon

Mathematics and quantitative finance



Jess

NHS physiotherapist with clinical research experience

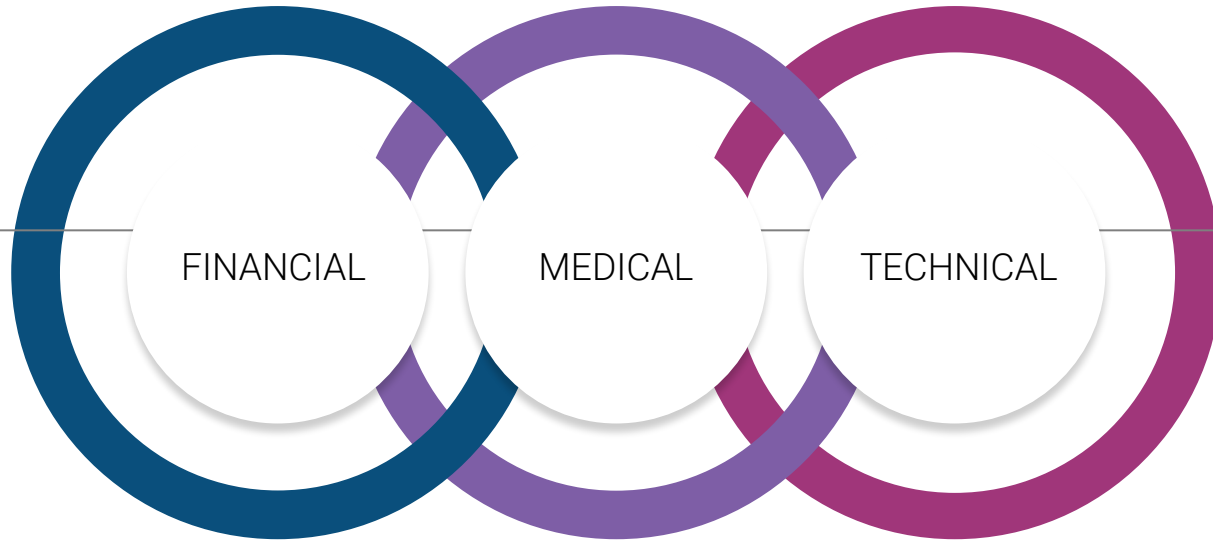


Eli

Physics and software engineering

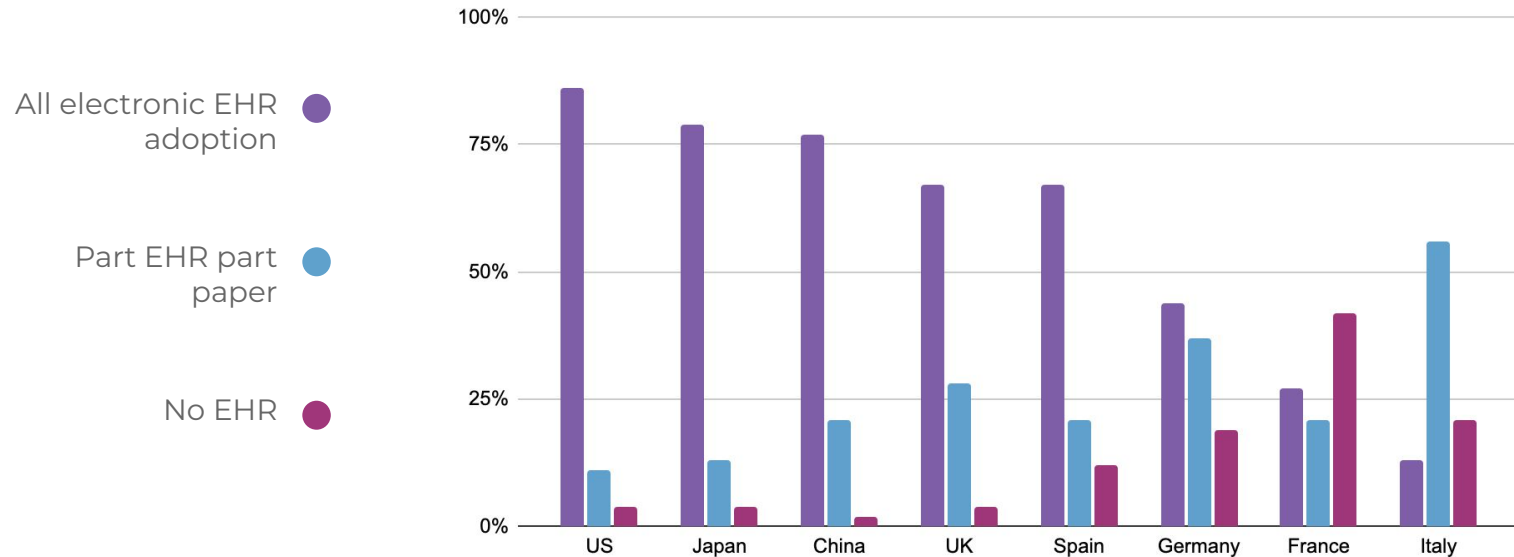
TEAM STRENGTHS

Leveraging three pillars of core expertise



Electronic Health Records (EHRs)

Most geographies have either implemented partial or total EHR adoption



ELECTRONIC HEALTH RECORDS (EHRs) ARE NOT SHAREABLE.

EHRs were designed to increase data flow throughout healthcare systems to enable more coordinated, efficient patient care

ELECTRONIC HEALTH RECORDS (EHRs) ARE NOT SHAREABLE.

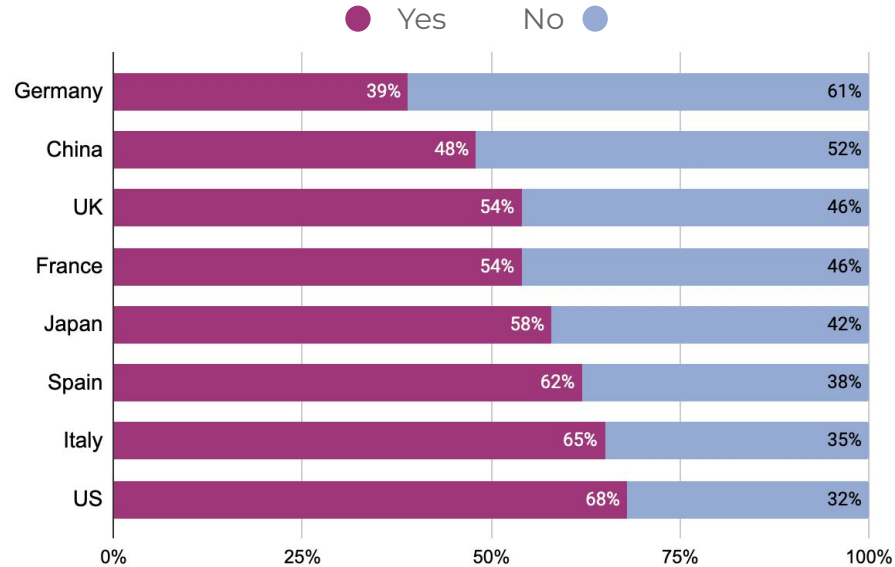
Different EHR systems have been adopted as EHRs have been introduced over time

For example, there are 21 different EHR vendors in the NHS

Competitive pressures do not incentivise shareability between different vendors and their competitors

EHR SHAREABILITY

Do you share patient EHRs electronically with other institutions such as other hospitals, laboratories, etc.?



WHAT is the impact

£608 million

Central administration budget for NHS England in 2022/23

£150 million

Investment into the NHS to enable secure, transformative data-sharing, including investment in data infrastructure

£30.4 million

We estimate the lack of connectivity between NHS systems to be worth £30.4 million annually

£5bn per year

Potential economic value to NHS data could be realized through operational savings, enhanced patient outcomes generated through Big Data, and AI¹

1. How we can place a value on health care data (EY Global Health Sciences, 2019)

CURRENT PROCESS

Information is
typed into a
word document



Information is
then entered
into an EHR

Data is exported
into word
document



Document is
sent via email or
mail



Data is retyped
and entered into
EHR

THE SOLUTION TALOS

Flowchart of TALOS process

TALOS DEMO

STRATEGY AND TIMELINE

FEBRUARY
2023



Demo proof of concept standardisation and data transfer between PDF, EHR and email format

Alpha demo launch within UCL hospitals catered towards physician/hospital managers pain point of admin



MAY
2023

Business development: demo to healthcare managers in the UK

Tech development: Beta launch

LATE
2023



Business development: Wider scale UK launch seeking collaboration partners for integrations such as Nuance DAX



2023

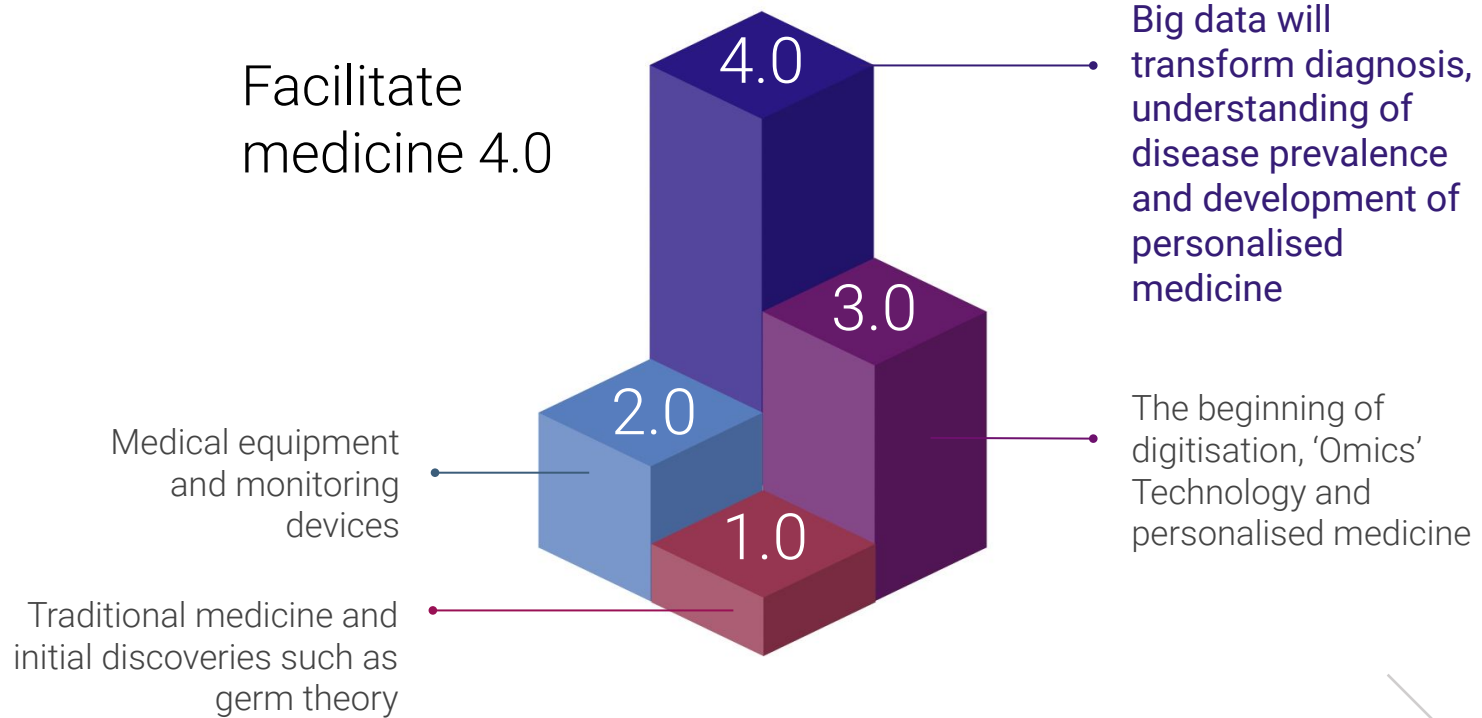
LONG TERM VISION



Blockchain integration for enhancing patient/doctor accessibility

Facilitating data collation at a global scale and generating insights into disease prevalence

FUTURE VISION

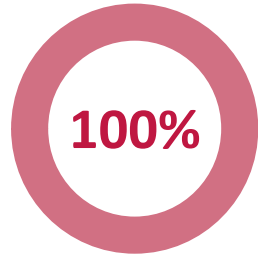




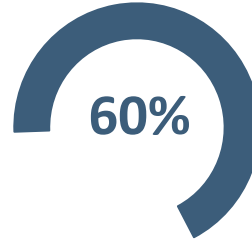
TALOS

Q&A

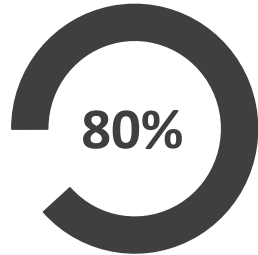
NHS interviews



Agreed that the use of multiple EPR systems across services creates additional tasks accessing notes, and is time-consuming.



Agreed that the shareability of EPR systems needs to be improved. Others did not need to share/ gain access to external records due to their job role, or they have medical secretaries to manages these issues.



Expressed that a minority of their tasks is still reliant on paper and agree that these can be digitalised to save time



Stated that ideally EPR systems should be centralised or improved to accommodate the need of accessing external records.

NHS interviews

I spend approx. 2hrs/ week to gain access to patient records on another electronic systems... TALOS would speed up the tedious process of accessing essential patient records.

First Contact Practitioner, GP Clinic and Senior Specialist Physiotherapist, NHS outpatient clinic

Gaining records from a different hospital is a nightmare....takes 3 hours...and it involves multiple people e.g. admin, professionals from another sectors... TALOS offers a good way to make records shareable without overriding those important records.

Physiotherapist, NHS and Pitch Side Football Academy Physiotherapist

On occasions, I received enquiry from care home, community hospitals, or pharmacy and needed to share patient's records/prescriptions...certain areas of the hospital is still using paper chart and paper prescriptions which can be digitalised

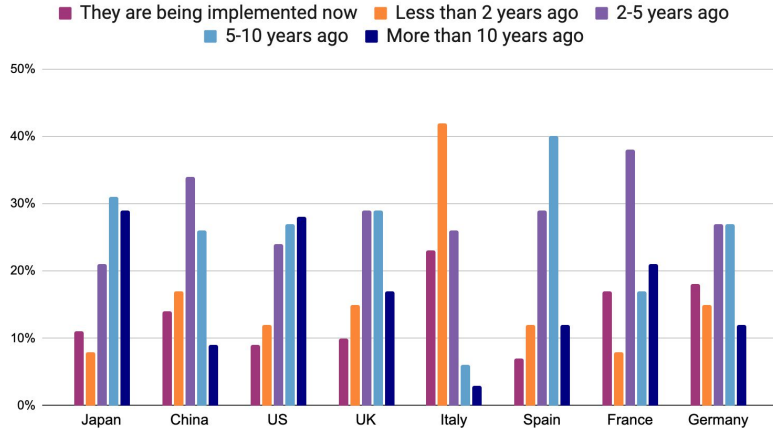
Pharmacist, NHS acute hospital

I have issues accessing patient records from the community sectors on a weekly basis...I have to spend 2-4 hours contacting the relevant clinicians for information and sometimes this can take up to days if the person is working part-time/ on annual leave.

Senior Occupational Therapist, NHS acute hospital

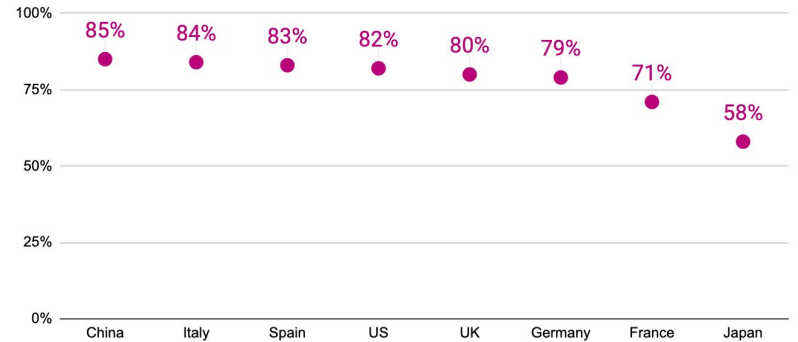
EHR TIMELINE

When did you implement your EHR system?



Different EHR systems have been adopted as technologies have been introduced over time

EHR satisfaction by geography



Source: GlobalData's EHR survey 2022 Q: How satisfied are you with your EHR?

The US, UK, and Japan were among the early adopters of EHRs however here was no strong correlation between satisfaction rates and time implemented